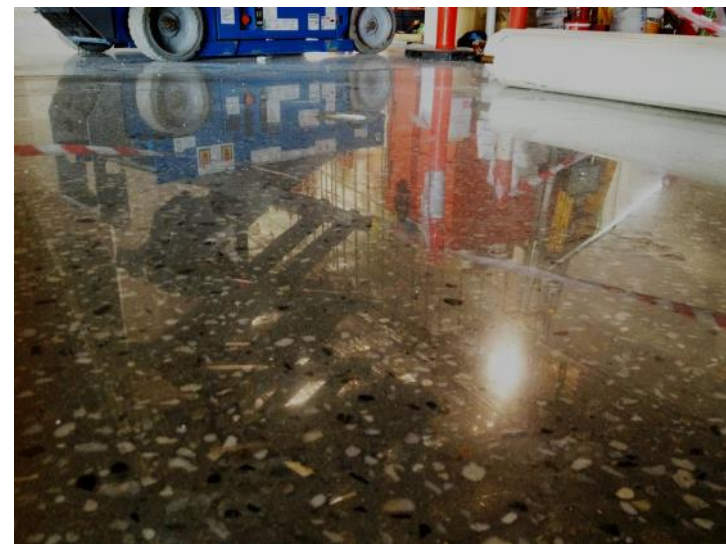
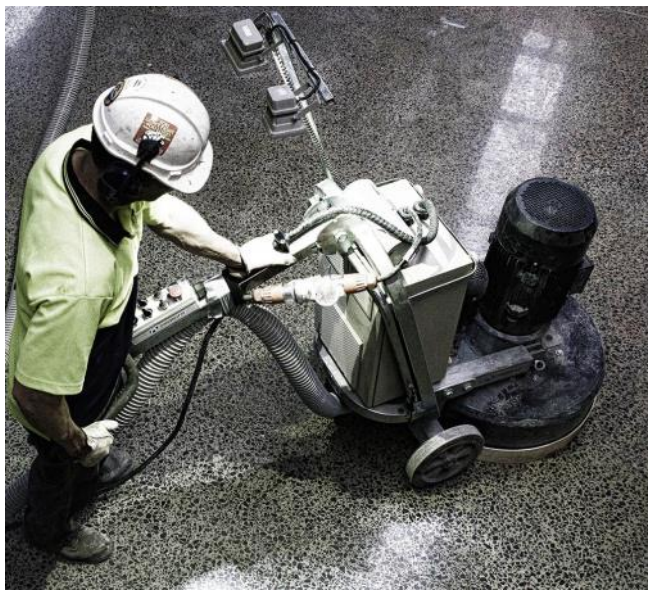
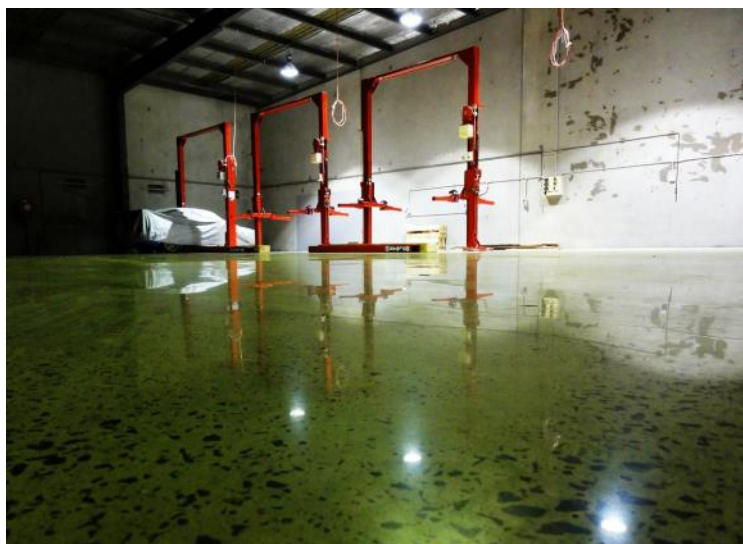




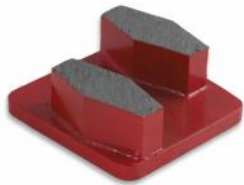
GRINDING GUIDE

CONCRETE POLISHING—SOFT CONCRETE—EXPOSED AGGREGATE
HEAVIER MACHINES (650/680/800/820/950)

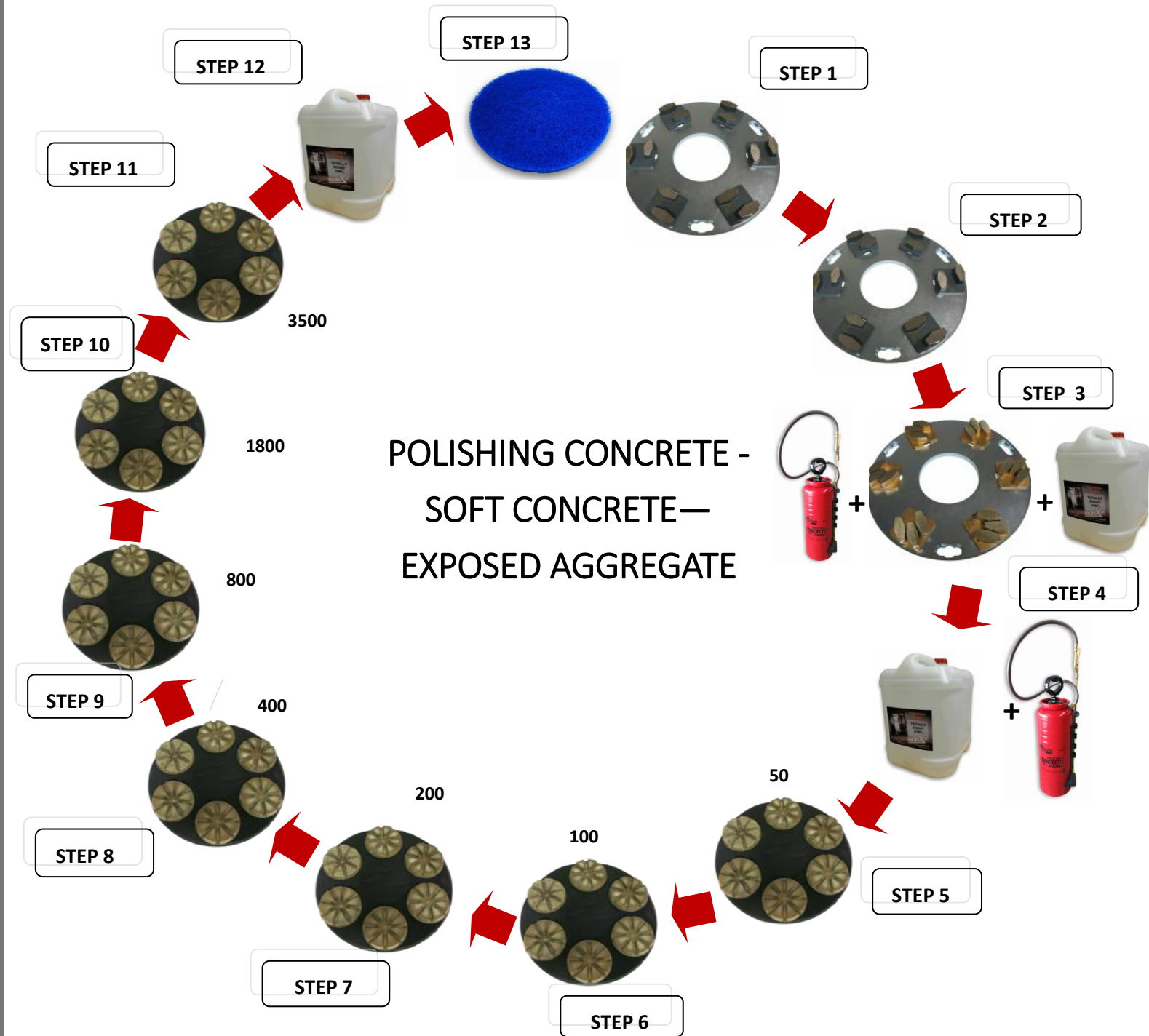




POLISHING CONCRETE
SOFT CONCRETE



WORX+
5/176 Canterbury Rd
Bayswater Nth, 3153
Victoria
1300 897 873
www.totallyworks.com





POLISHING CONCRETE
SOFT CONCRETE



WORX+
5/176 Canterbury Rd
Bayswater Nth, 3153
Victoria
1300 897 873
www.totallyworks.com



STEP 1	Full set (6 segments per disc), M30G OR H30G segments
STEP 2	Full set (6 segments per disc), M50K segments for scratch removal from step 1 diamonds.
STEP 3	Fill holes with Totally Restore grouting formula. Wet floor, spray and grind simultaneously with full set (6 segments per disc), S120L or M120K for scratch removal of step 2 diamonds.
STEP 4	Apply Totally Boost densifier/hardener with sprayer or microfibre mop. Leave to cure 6-12 hours.
STEP 5	6 pads per disc, 50 grit resin (Specialty 50) pads for scratch removal from step 3 diamonds.*
STEP 6	6 pads per disc, 120 grit IMPACT resin pads for scratch removal from step 5 diamonds.*
STEP 7	6 pads per disc, 200 grit IMPACT resin pads for scratch removal from step 6 diamonds.
STEP 8	6 pads per disc, 400 grit IMPACT resin pads—polishing stage.
STEP 9	6 pads per disc, 800 grit IMPACT resin pads—polishing stage
STEP 10	6 pads per disc, 1800 grit IMPACT resin pads— polishing stage
STEP 11	6 pads per disc, 3500 grit IMPACT resin pads—final polishing stage
STEP 12	Apply Totally Defend impregnating sealer with sprayer or microfibre mop and then spread with microfibre mop. Allow min 30mins to dry.
STEP 13	Buff polished concrete slab with nylon burnishing pads until excess sealer and residue has been removed.

*OPTIONAL STEP: Lick Coat— Thin application of densifier using sprayer and microfibre mop following this resin step



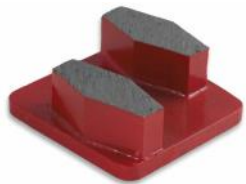
GRINDING GUIDE

CONCRETE POLISHING—SOFT CONCRETE—EXPOSED AGGREGATE
LIGHTER MACHINES MACHINES (500/530)

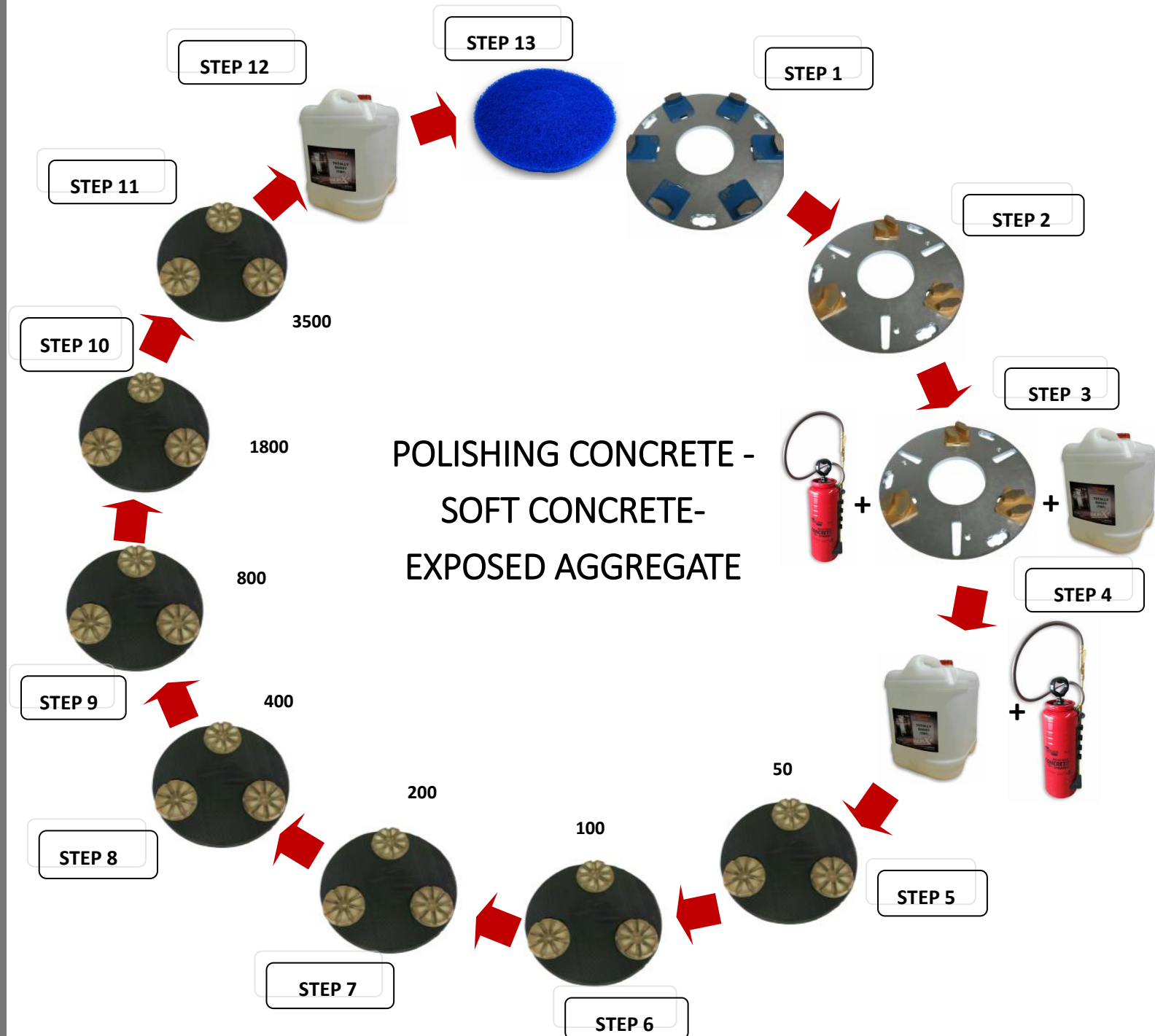




POLISHING CONCRETE
SOFT CONCRETE



WORX+
5/176 Canterbury Rd
Bayswater Nth, 3153
Victoria
1300 897 873
www.totallyworks.com

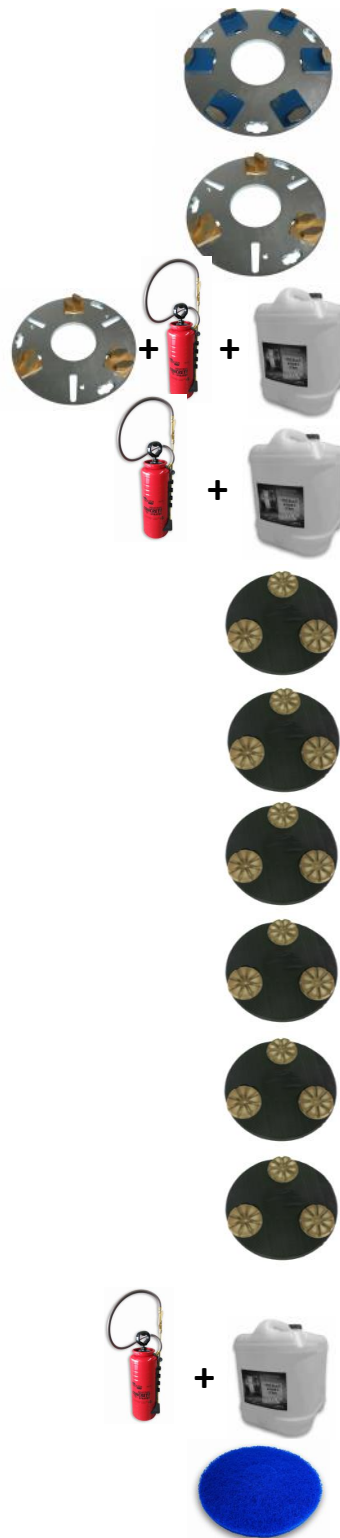




POLISHING CONCRETE
SOFT CONCRETE



WORX+
5/176 Canterbury Rd
Bayswater Nth, 3153
Victoria
1300 897 873
www.totallyworks.com



STEP 1	Full set (6 segments per disc), M30F OR H30F segments.
STEP 2	Half set (3 segments per disc), S50K or M50K segments for scratch removal from step 1 diamonds.
STEP 3	Fill holes with Totally Restore grouting formula .Wet floor,spray and grind simultaneously with half set (3 segments per disc), S120K for scratch removal of step 2 diamonds.
STEP 4	Apply Totally Boost densifier/hardener with sprayer or microfibre mop. Leave to cure 6-12 hrs.
STEP 5	3 segments per disc, 50 grit (Specialty 50) resin pads for scratch removal from step 3 diamonds.*
STEP 6	3 segments per disc, 120 grit IMPACT resin pads for scratch removal from step 5 diamonds.*
STEP 7	3 segments per disc, 200 grit IMPACT resin pads for scratch removal from step 6 diamonds.
STEP 8	3 segments per disc, 400 grit IMPACT resin pads for scratch removal from step 7 diamonds.
STEP 9	3 segments per disc, 800 grit IMPACT resin pads—first polishing stage
STEP 10	3 segments per disc, 1500 grit IMPACT resin pads—second polishing stage
STEP 11	3 segments per disc, 3500 grit IMPACT resin pads— final polishing stage
STEP 12	Apply Totally Defend impregnating sealer with sprayer or microfibre mop and then spread with microfibre mop. Allow min 30 mins to dry.
STEP 13	Buff polished slab with nylon burnishing pads until excess sealer and residue has been removed.

* OPTIONAL STEP: Lick Coat– Thin application of densifier using sprayer and microfibre mop following this resin step



ASSOCIATED PRODUCTS GUIDE

LARGE SOFT BROOM

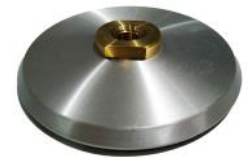


SPRAYER



**BURNISHING
PADS**

RESIN HAND PADS



**RESIN HAND PADS
BACKING PLATES**

MICROFIBRE MOPS



CUPWHEELS



**RIP CHANGE RESIN
MOUNTING DISCS**

**FLOOR TREATMENT
PRODUCTS**





GUIDE NOTES

GLOSS LEVEL:

HONED FINISH: Stop at 200 grit resin/ Step 7 and proceed to Step 12

MID GLOSS FINISH: Stop at 400 grit resin/Step 8 and proceed to Step 12

HIGH GLOSS FINISH: Stop at 800,1500 or 3500 grit resin depending on desired finished gloss levels. Then proceed to Step 12.

FLOOR RESILIENCE/DURABILITY:

The durability/resilience of a mechanically polished concrete floor is in most instances directly related to the gloss level. When WORX+ grinding guides are adhered to, one can generally assume the higher the level of gloss, the greater longevity and resilience properties the floor will offer.

THIS GUIDE IS TO BE USED AS AN OVERVIEW FOR THE RELEVANT GRINDING PROCESS AND NOT A DEFINITIVE RESOURCE. CONSULT A WORX+ REPRESENTATIVE FOR ASSISTANCE WHERE REQUIRED.