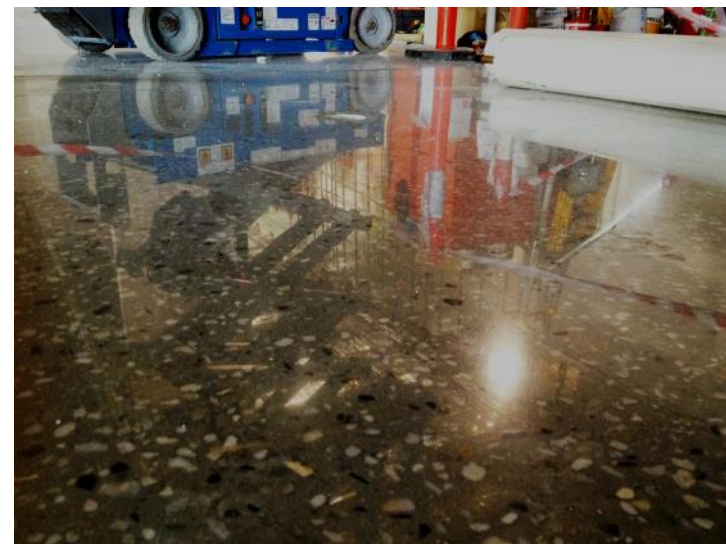
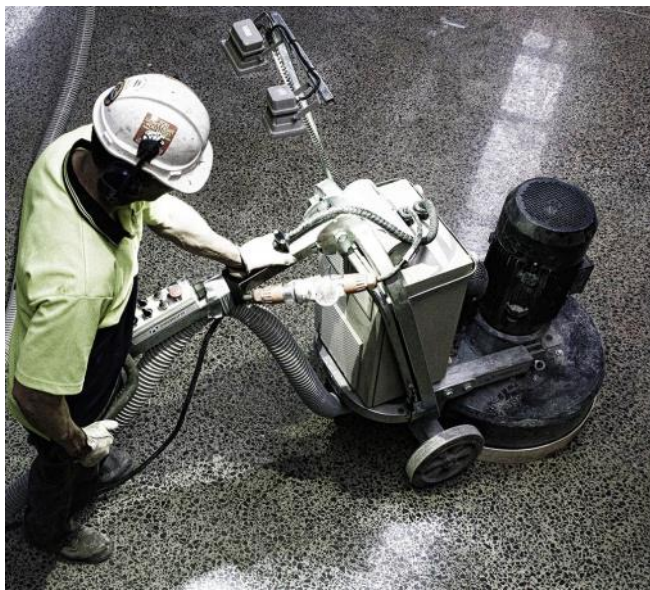
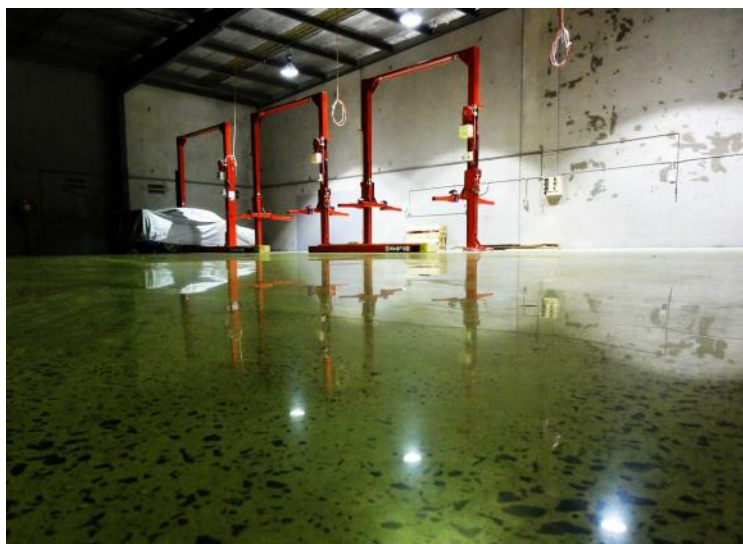




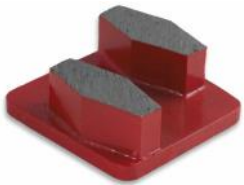
# GRINDING GUIDE

CONCRETE POLISHING—HARD CONCRETE – EXPOSED AGGREGATE  
HEAVIER MACHINES (650/680/800/820/950)

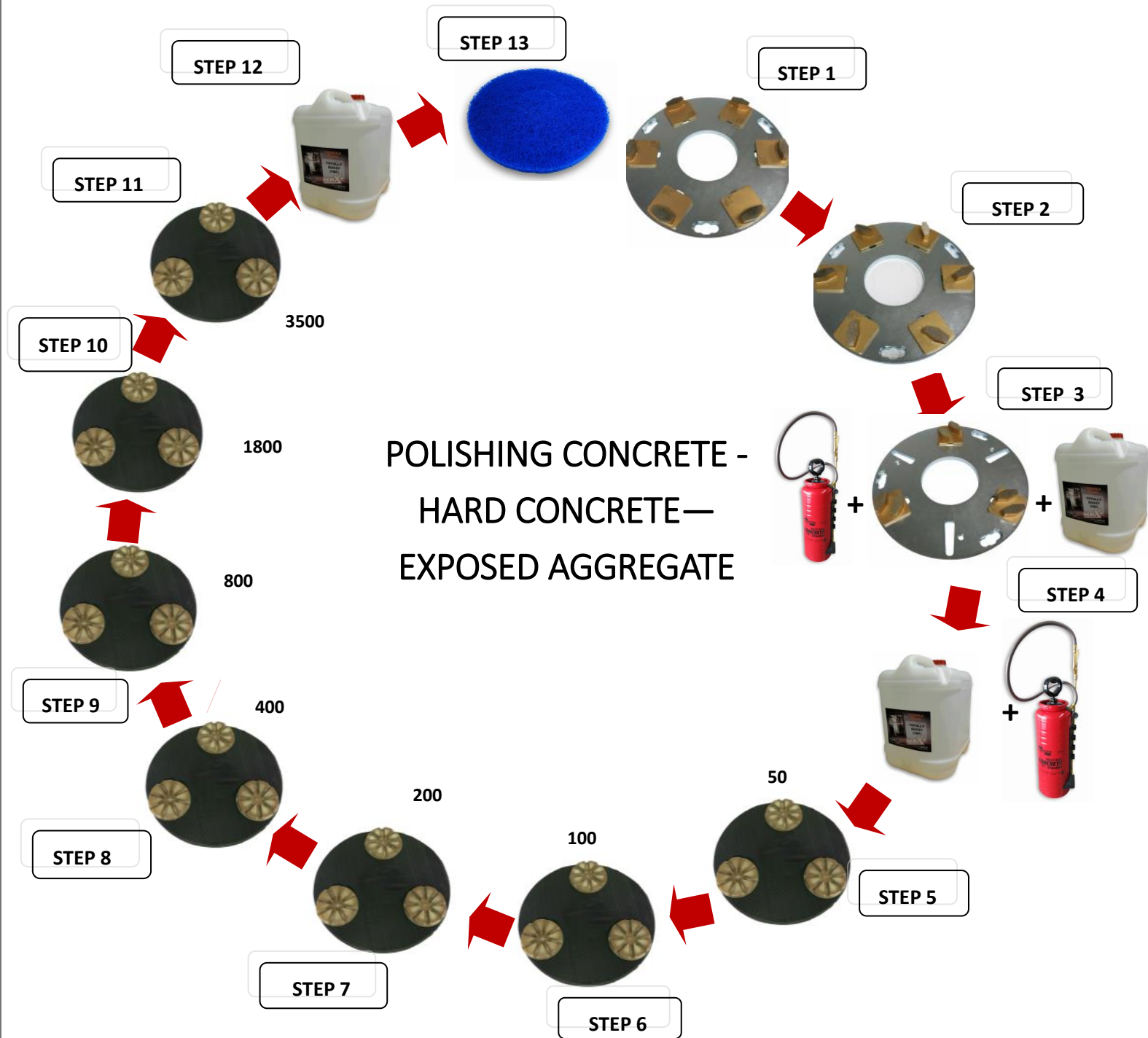




POLISHING CONCRETE  
HARD CONCRETE

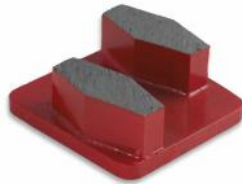


WORX+  
5/176 Canterbury Rd  
Bayswater Nth, 3153  
Victoria  
1300 897 873  
www.totallyworks.com





POLISHING CONCRETE  
HARD CONCRETE



WORX+  
5/176 Canterbury Rd  
Bayswater Nth, 3153  
Victoria  
1300 897 873  
www.totallyworks.com



<b>STEP 1</b>	Full set (6 segments per disc), S16F or S30F segments if seeking a flat floor. If flatness is not important (you want to follow the ups and downs in the surface), a half set (3 segments per disc) of S16G or S30G is suggested.
<b>STEP 2</b>	Full set (6 segments per disc), S50J segments for scratch removal from step 1 diamonds. If flatness is not important (you want to follow the ups and downs in the surface), a half set (3 segments per disc) of S50K is suggested.
<b>STEP 3</b>	Fill holes with <b>Totally Restore</b> grouting formula. Wet floor, spray and grind simultaneously with full set (6 segments per disc), S120J or half set (3 segments per disc) S120K segments for scratch removal of step 2 diamonds.
<b>STEP 4</b>	Apply <b>Totally Boost</b> densifier/hardener with sprayer or microfibre mop. Leave to cure 6-12 hours.
<b>STEP 5</b>	3 pads per disc, 50 grit Specialty 50 resin pads for scratch removal from step 3*
<b>STEP 6</b>	3 pads per disc, 100 grit IMPACT resin pads for scratch removal from step 5 diamonds*
<b>STEP 7</b>	3 pads per disc, 200 grit IMPACT resin pads for scratch removal from step 6 diamonds
<b>STEP 8</b>	3 pads per disc, 400 grit IMPACT resin pads for scratch removal from step 7 diamonds
<b>STEP 9</b>	3 pads per disc, 800 grit IMPACT resin pads—first polishing stage
<b>STEP 10</b>	3 pads per disc, grit IMPACT resin pads—second polishing stage
<b>STEP 11</b>	3 pads per disc, grit IMPACT resin pads—final polishing stage
<b>STEP 12</b>	Apply <b>Totally Defend</b> impregnating sealer with sprayer or microfibre mop and then spread with microfibre mop. Allow min 30 mins to dry.
<b>STEP 13</b>	Buff concrete slab with nylon burnishing pads until excess sealer and residue has been removed.

\* OPTIONAL STEP: Lick Coat—Thin application of densifier using sprayer and microfibre mop following this resin step.





# GRINDING GUIDE

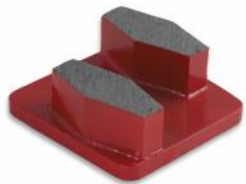
CONCRETE POLISHING—HARD CONCRETE – EXPOSED AGGREGATE

LIGHTER MACHINES (500/530)

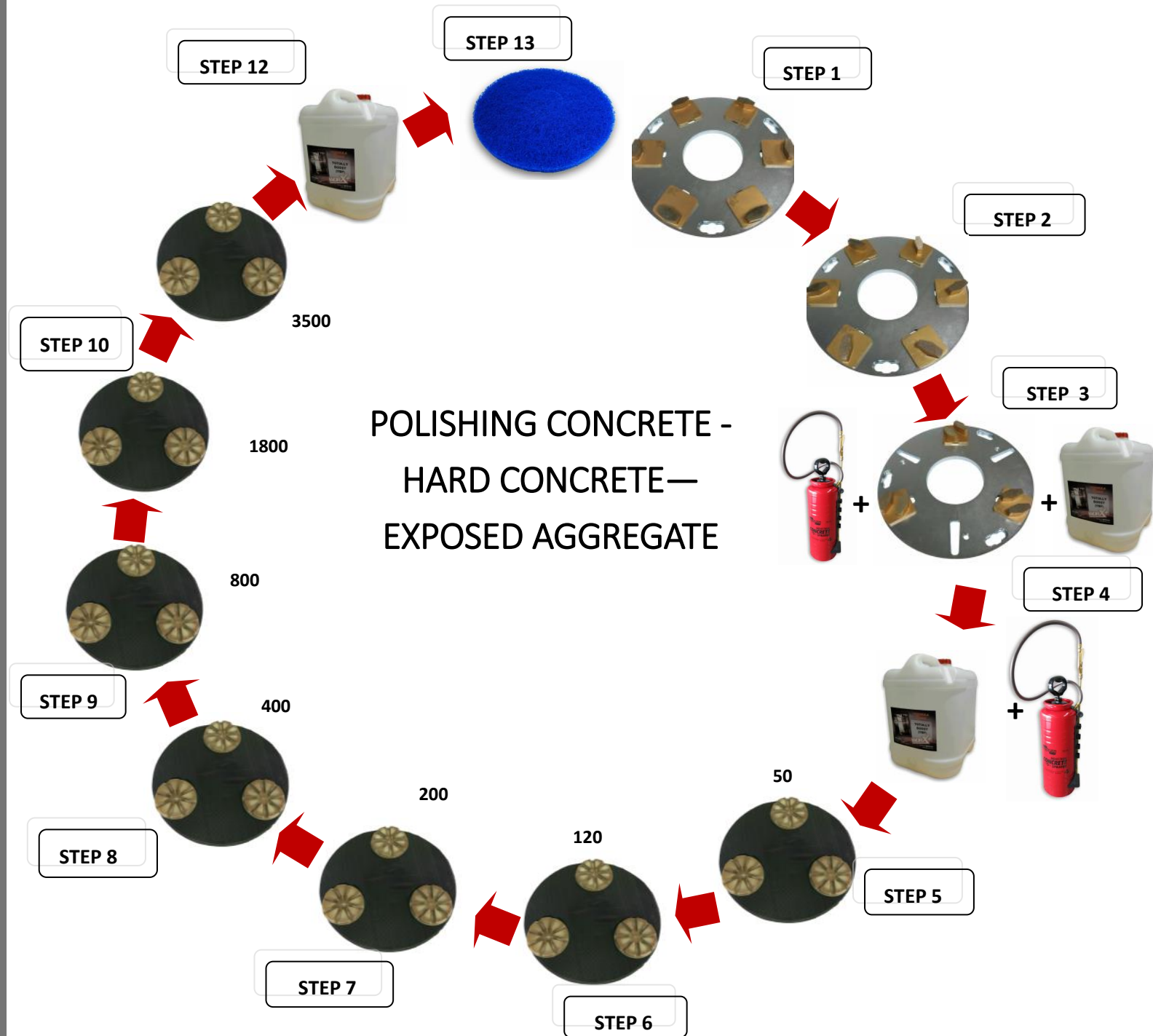




POLISHING CONCRETE  
HARD CONCRETE



WORX+  
5/176 Canterbury Rd  
Bayswater Nth, 3153  
Victoria  
1300 897 873  
www.totallyworks.com





POLISHING CONCRETE  
HARD CONCRETE



WORX+  
5/176 Canterbury Rd  
Bayswater Nth, 3153  
Victoria  
1300 897 873  
www.totallyworks.com



<b>STEP 1</b>	Full set (6 segments per disc), S16F or S30F segments if seeking a flat floor. If flatness is not important (you want to follow the ups and downs in the surface), a half set (3 segments per disc) of S16G or S30G is suggested.
<b>STEP 2</b>	Full set (6 segments per disc), S50J segments for scratch removal from step 1 diamonds. If flatness is not important (you want to follow the ups and downs in the surface), a half set (3 segments per disc) of S50K is suggested.
<b>STEP 3</b>	Fill holes with <b>Totally Restore</b> grouting formula. Spray and grind simultaneously with full (6 segments per disc), set S120J or half set S120K segments for scratch removal of step 2 diamonds.
<b>STEP 4</b>	Apply <b>Totally Boost</b> densifier/hardener with sprayer or microfibre mop. Leave to cure 6-12 hours.
<b>STEP 5</b>	3 segments per disc 50 grit Specialty 50 resin pads for scratch removal from step 3*
<b>STEP 6</b>	3 segments per disc, 120 grit resin pads for scratch removal from step 5 diamonds*
<b>STEP 7</b>	3 segments per disc, 200 grit resin pads for scratch removal from step 6 diamonds
<b>STEP 8</b>	3 segments per disc, 400 grit resin pads for scratch removal from step 7 diamonds
<b>STEP 9</b>	3 segments per disc, 800 grit resin pads—first polishing stage
<b>STEP 10</b>	3 segments per disc 1800 grit resin pads—second polishing stage
<b>STEP 11</b>	3 segments per disc, 3500 grit resin pads— final polishing stage
<b>STEP 12</b>	Apply <b>Totally Defend</b> impregnating sealer with sprayer or microfibre mop and then spread with microfibre mop. Allow min 30 mins to dry.
<b>STEP 13</b>	Buff concrete slab with nylon burnishing pads until excess sealer and residue has been removed.

\* OPTIONAL STEP: Lick Coat—Thin application of densifier using sprayer and microfibre mop following this resin step.





ASSOCIATED PRODUCTS GUIDE

**SOFT BROOM**



**SPRAYER**



**BURNISHING  
PADS**

**RESIN HAND PADS**



**RESIN HAND PADS  
BACKING PLATES**

**MICROFIBRE MOPS**



**CUPWHEELS**



**RIP CHANGE RESIN  
MOUNTING DISCS**

**FLOOR TREATMENT  
PRODUCTS**





## GUIDE NOTES

### **GLOSS LEVEL:**

**HONED FINISH:** Stop at 200 grit resin/ Step 7 and proceed to Step 12

**MID GLOSS FINISH:** Stop at 400 grit resin/Step 8 and proceed to Step 12

**HIGH GLOSS FINISH:** Stop at 800, 1500 or 3500 grit resin depending on desired finished gloss levels. Then proceed to Step 12.

### **FLOOR RESILIENCE/DURABILITY:**

The durability/resilience of a mechanically polished concrete floor is in most instances directly related to the gloss level. When WORX+ grinding guides are adhered to, one can generally assume the higher the level of gloss, the greater longevity and resilience properties the floor will offer.

THIS GUIDE IS TO BE USED AS AN OVERVIEW FOR THE RELEVANT GRINDING PROCESS AND NOT AS A DEFINITIVE RESOURCE. CONSULT A WORX+ REPRESENTATIVE FOR ASSISTANCE WHERE REQUIRED.